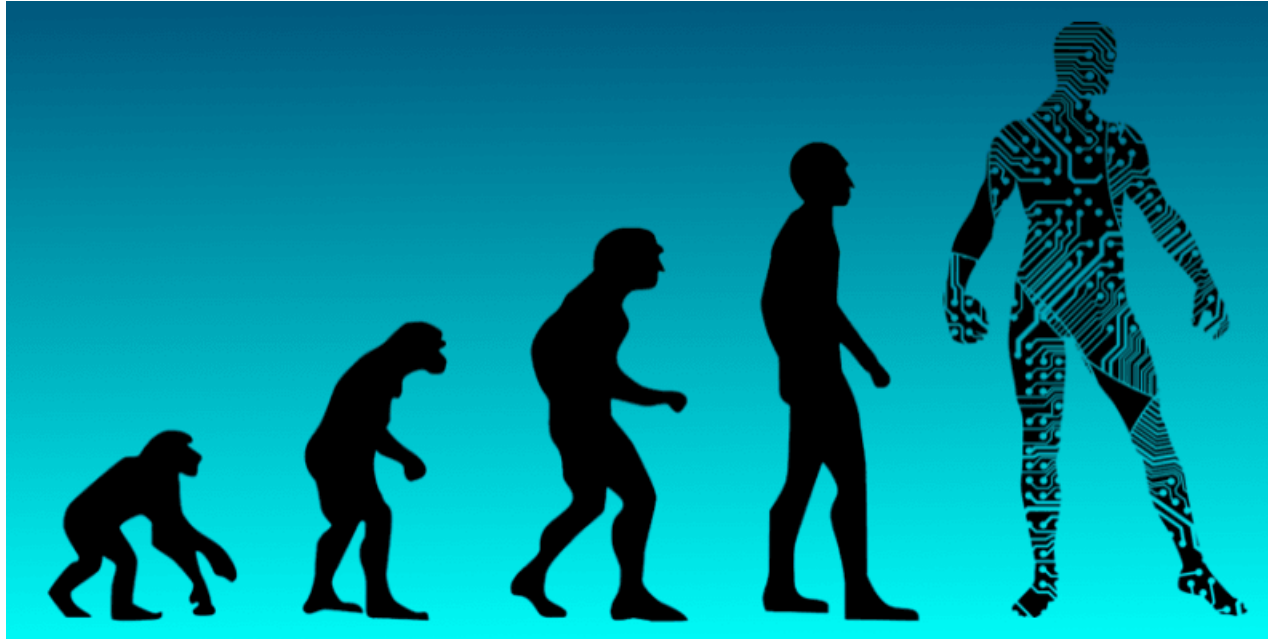




# DIGITAL LEARNING





Our lives are dominated by technology  
we use cloud computing to synch information among all of our electronic  
devices

we can text, e-mail, and tweet from our smart phones  
we have access to information 24/7 through the Internet.

It's no wonder then that technology  
is also increasingly being applied to learning.





More and more companies are turning to e-learning to provide training and professional development opportunities to their employees, thanks to its accessibility and adaptability.





Hellenic Post has grasped the importance of adopting professional development strategies for its employees.

Technology has proven to be a great enabler for learning by granting wider access and facilitating continuing education for ELTA employees throughout Greece.

It provides an infrastructure through which Hellenic Post has developed an **interactive** and engaging **platform** to deliver skill-building, training information.

KEK-ELTA e-learning platform vastly increases the scope and reach of the corporate training effort.





Social Networks

Δεν έχετε εισέλθει. (Είσοδος)

# Καλώς ήρθατε!

Το ΚΕΚ ΕΛΤΑ παρέχει εκπαιδευτικά προγράμματα πιστοποίησης επαγγελματικών προσόντων και σταδιοδρομίας καθώς και συνεχούς επιμόρφωσης επαγγελματικής βελτίωσης και υποστήριξης των αλλαγών.



Πιστοποίηση Επαγγελματικών Προσόντων



Βελτίωση και Υποστήριξη



"Ανταλλαγή" Γνώσεων και Ιδεών

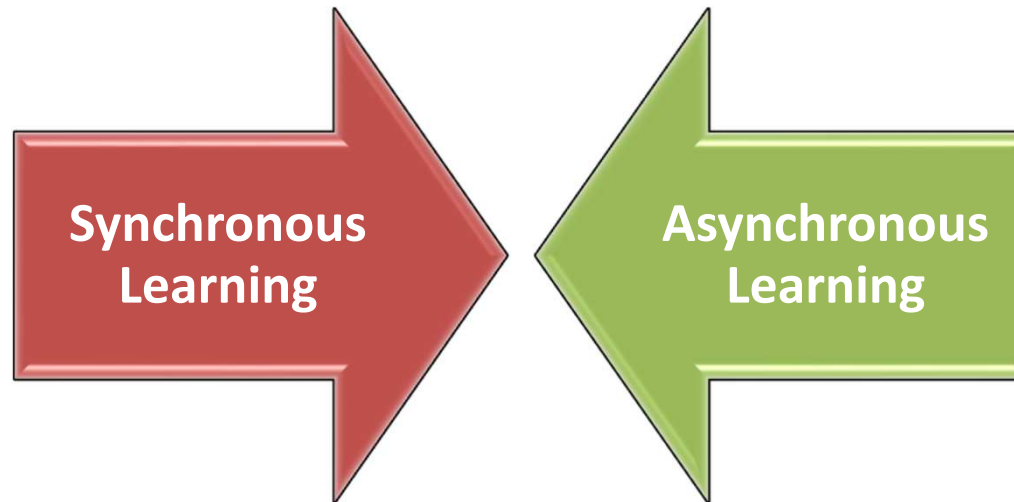


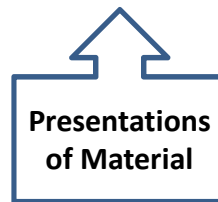
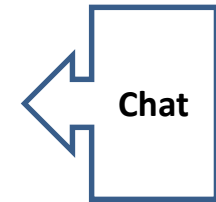
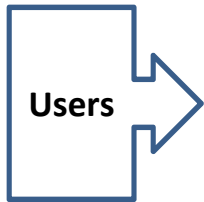
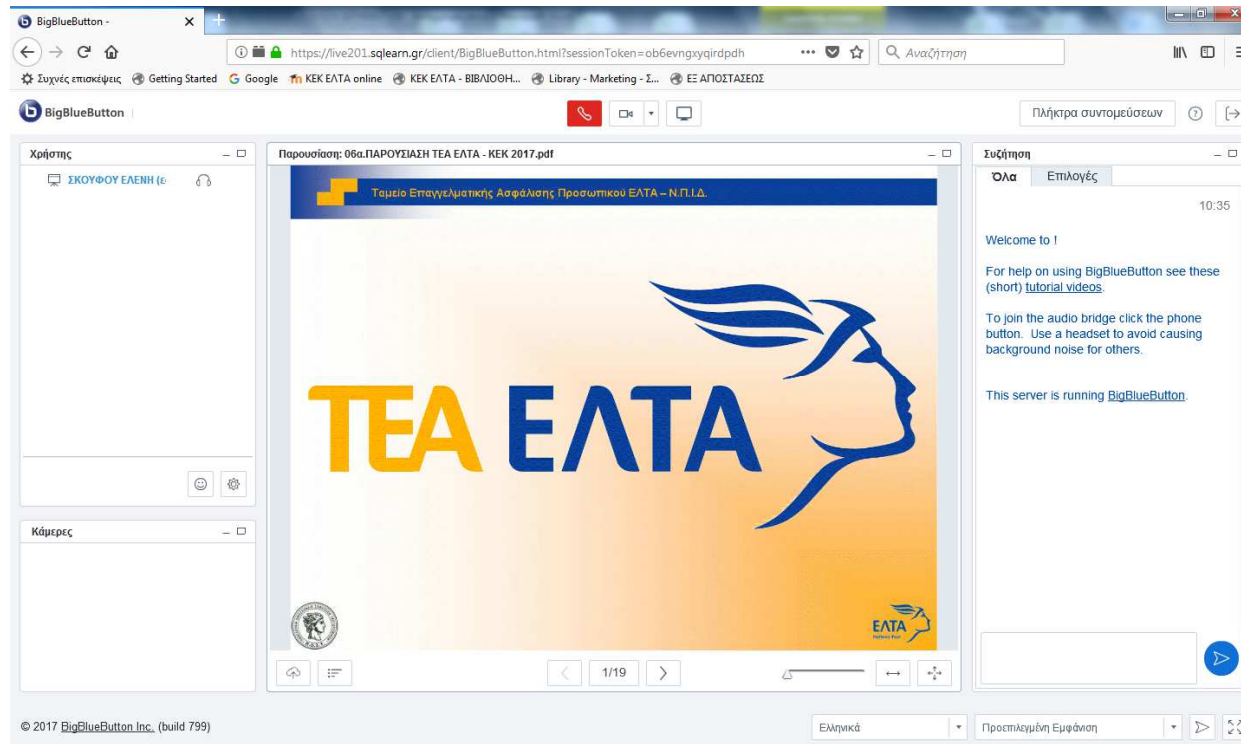
## **User-friendly platform**

enables employees to navigate their way around and learn how to use it quickly.

A teaching tool that most employees feel comfortable using.

Supports:





## Synchronous Learning Interface (Virtual Classroom)

All users interact with the teacher and with each other simultaneously in real time





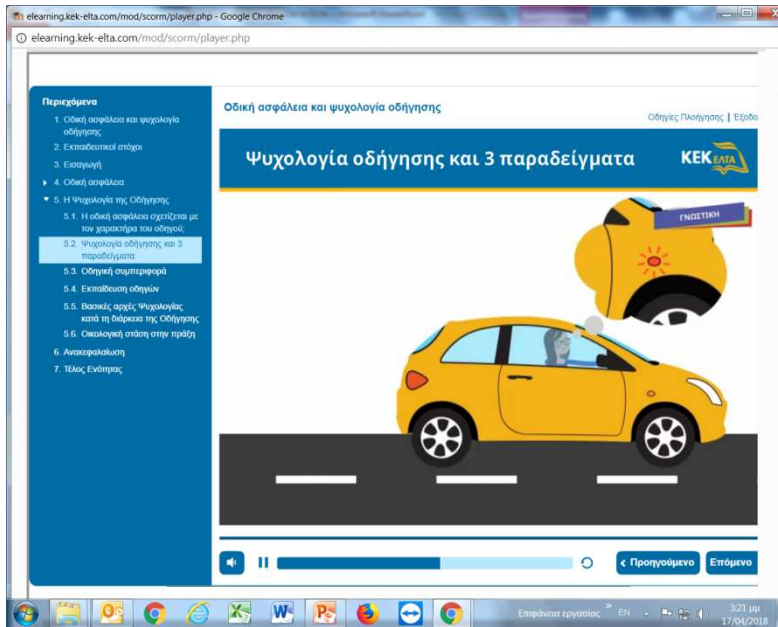


## Asynchronous Learning Interface

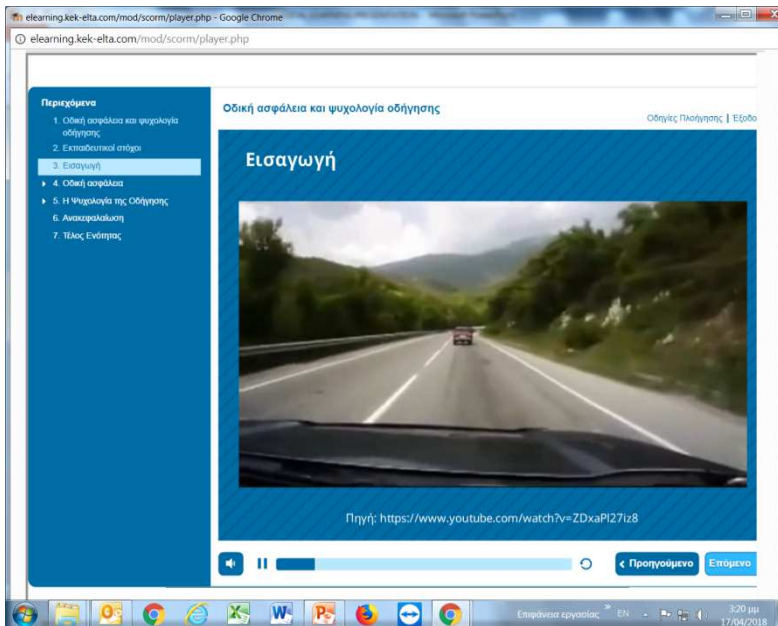
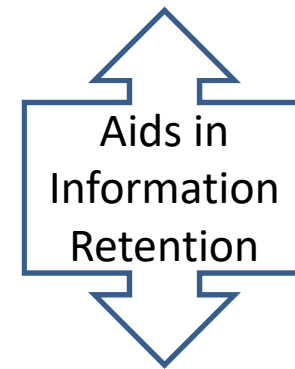
All users may watch interesting webinars and study material at their own pace and time







Use of Animation



Use of Videos



elearning.kek-elta.com/mod/scorm/player.php - Google Chrome

elearning.kek-elta.com/mod/scorm/player.php

Περιεχόμενα

1. Οδική ασφάλεια και ψυχολογία οδήγησης
2. Εκπαιδευτικοί στόχοι
3. Εισαγωγή
4. Οδική ασφάλεια
5. Η Ψυχολογία της Οδήγησης
  - 5.1. Η οδική ασφάλεια σχετίζεται με τον χαρακτήρα του οδηγού.
  - 5.2. Ψυχολογία οδήγησης και 3 παραδείγματα
  - 5.3. Οδηγική συμπεριφορά
  - 5.4. Εκπαίδευση οδηγών
  - 5.5. Βασικές αρχές Ψυχολογίας κατά τη διάρκεια της Οδήγησης
  - 5.6. Οικολογική στάση στην πράξη
6. Ανακεφαλαίωση
7. Τέλος Ενότητας

Οδική ασφάλεια και ψυχολογία οδήγησης

Οδηγός Πλοήγησης | Έξοδος

## Ψυχολογία οδήγησης και 3 παραδείγματα

ΚΕΚ ΕΛΤΑ

ΘΕΛΗΣΗ ΚΑΤΑΝΟΗΣΗ ΠΡΑΞΗ

3:21 μμ 17/04/2018

elearning.kek-elta.com/mod/scorm/player.php - Google Chrome

elearning.kek-elta.com/mod/scorm/player.php

Περιεχόμενα

1. Ατμοσφαιρική ρύπανση
2. Εκπαιδευτικοί στόχοι
3. Οικολογική στάση στην πράξη
4. Διαδικασία παραγωγής ρύπων
5. Σύσταση καυσίμου στον κινητήρα φορτηγού
6. Η ρύπανση στους μεγάλους κινητήρες
7. Είδη ρύπων που παράγουν τα οχήματα
8. Έρευνα Παγκόσμιου Οργανισμού Υγείας
9. Επιπτώσεις για τον άνθρωπο
10. Οφέλη οικολογικής οδήγησης
11. Πρακτικές οικολογικής οδήγησης
12. Οικολογική στάση στην πράξη
13. Ανακεφαλαίωση
14. Τέλος Ενότητας

Ατμοσφαιρική ρύπανση

Οδηγός Πλοήγησης | Έξοδος

## Διαδικασία παραγωγής ρύπων

ΚΕΚ ΕΛΤΑ

3:25 μμ 17/04/2018

elearning.kek-elta.com/mod/scorm/player.php - Google Chrome

elearning.kek-elta.com/mod/scorm/player.php

Περιεχόμενα

1. Ατμοσφαιρική ρύπανση
2. Εκπαιδευτικοί στόχοι
3. Οικολογική στάση στην πράξη
4. Διαδικασία παραγωγής ρύπων
5. Σύσταση καυσίμου στον κινητήρα φορτηγού
6. Η ρύπανση στους μεγάλους κινητήρες
7. Είδη ρύπων που παράγουν τα οχήματα
8. Έρευνα Παγκόσμιου Οργανισμού Υγείας
9. Επιπτώσεις για τον άνθρωπο
10. Οφέλη οικολογικής οδήγησης
11. Πρακτικές οικολογικής οδήγησης
12. Οικολογική στάση στην πράξη
13. Ανακεφαλαίωση
14. Τέλος Ενότητας

Ατμοσφαιρική ρύπανση

Οδηγός Πλοήγησης | Έξοδος

## Επιπτώσεις για τον άνθρωπο

ΚΕΚ ΕΛΤΑ

Οι επιπτώσεις στην υγεία είναι πολλές και σοβαρές.

Συστήματα που προσβάλλονται από την ατμοσφαιρική ρύπανση στον ανθρώπινο οργανισμό:

- Το αναπνευστικό σύστημα.
- Το καρδιαγγειακό σύστημα.

3:27 μμ 17/04/2018

The trainer explains, examples or key points are illustrated visually



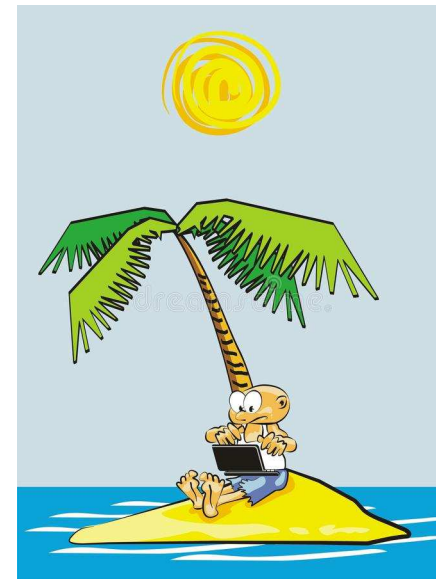
# Pros & Cons





## **Access:**

Perhaps the most valuable benefit of e-learning is that it provides access to a wider audience. The platform can offer training tools to employees anytime, just about anywhere they have computer access.

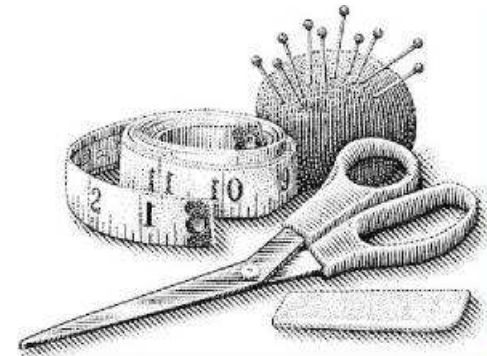




## Tailoring:

The platform can be customized to whether you need training for five employees or five thousand. It can also be tailored to the target group's needs.

If employees feel like they know certain topics very well, they can skim over them and waste less time. That way they can concentrate on the topics they need to really work on. Employees also get to learn at their own pace, which is advantageous, considering that most of them are balancing multiple tasks, workloads, and deadlines.





## **Convenience :**

A course is as close as a computer with an Internet connection.







## Low cost:

Another key advantage to e-learning—and one that finance departments can rejoice over—is its relative low cost.

It eliminates or greatly reduces, ancillary, non learning expenses of training, such as travel and lodging costs for participants.







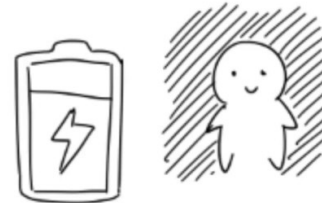
## Better for Some Learners:

E-learning courses are often better for people who learn through visual cues and experiential exercises and those that require more time, are language-challenged, or introverted.

Extraversion



Introversion





## Isolation:

Learning through the Internet on individual computers allows for wider access, but it can also easily lead to isolation. This may leave them with a feeling of isolation and lack of support. The lack of a physical classroom can be frustrating and demotivating.

**To avoid that:** some distance-education programs still do have an in-class component.



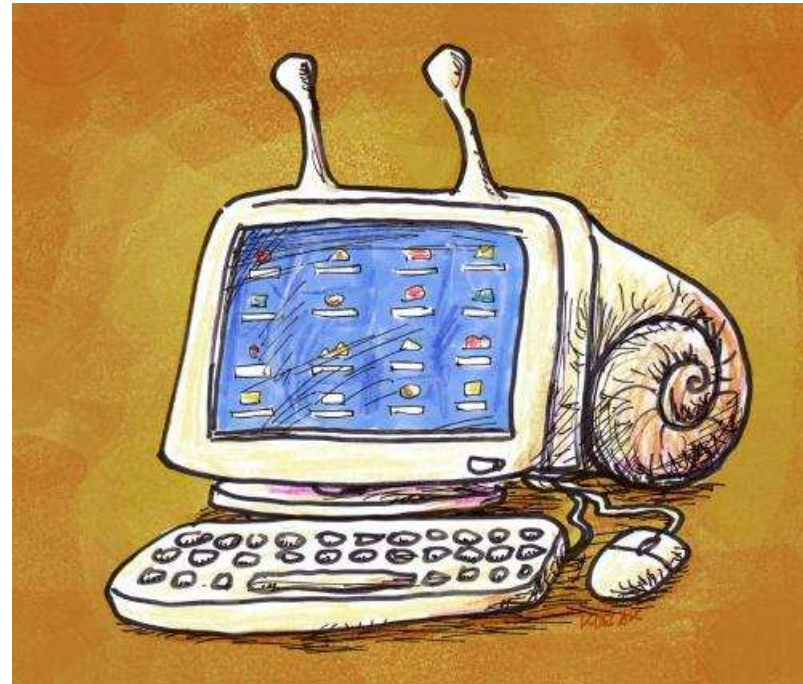


## Tech issues:

Slow web connections, older computers, specific browser requirements and poor device compatibility may be frustrating factors when accessing course materials.

### To avoid that:

- supporting help desk
- extra laptops available at KEK-ELTA premises.





## Lack of control.

Risk of some student's falling behind or just go through the material without really paying attention.

### To avoid that:

- synchronous learning may require cameras on
- Self tests help students realize what they missed





## Eco - Driving

Integrating innovative eco-friendly driving practices through the use of 3D simulation.

- A 3D Virtual platform simulating driving of long vehicles in urban and country environment.
- Two training driving seats can simulate manual and automatic gearbox.
- 3D Virtual Headsets or video walls





## **Digital Training Courses**

Becoming familiar with digital and smart technologies

### **Getting to know the internet and smart technologies:**

internet, e-mail, accounts, search engines, online transactions, purchases

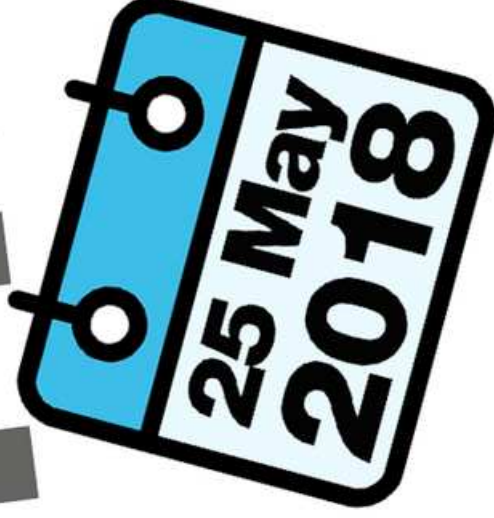
### **Internet dangers and safety:**

possible dangers , security settings in applications and social media, basic principles of online safety, the kids online habits, parental filters, addiction, helplines in case of emergency.





# GDPR



**G**eneral  
**D**ata  
**P**rotection  
**R**egulation







## **General Data Protection Regulation Training**

Data protection and cyber security tips to help employees protect:

- Their work and working environment
- Their personal life, family, home



Thank you

